

Profound IS – Geotechnical Monitoring System

IS - Liquid Levelling system

Project: Amsterdam Central Station (North/South Line), NL

Project description

In April 2003 the construction of the North/South Line in Amsterdam started. This new metro line will directly connect the historic city centre of Amsterdam with the north and south parts of the city.

For the construction of the metro station beneath the Amsterdam Central Station part of the original foundations on which the Central Station stands will have to be removed. As the tunnel under the IJ waterway will lie at a depth of 18 metres (60 ft), the connecting metro tunnel beneath the station will also need to be relatively deep. Until 2011, this area will remain the site of one of the most complex renovation projects in the Netherlands.



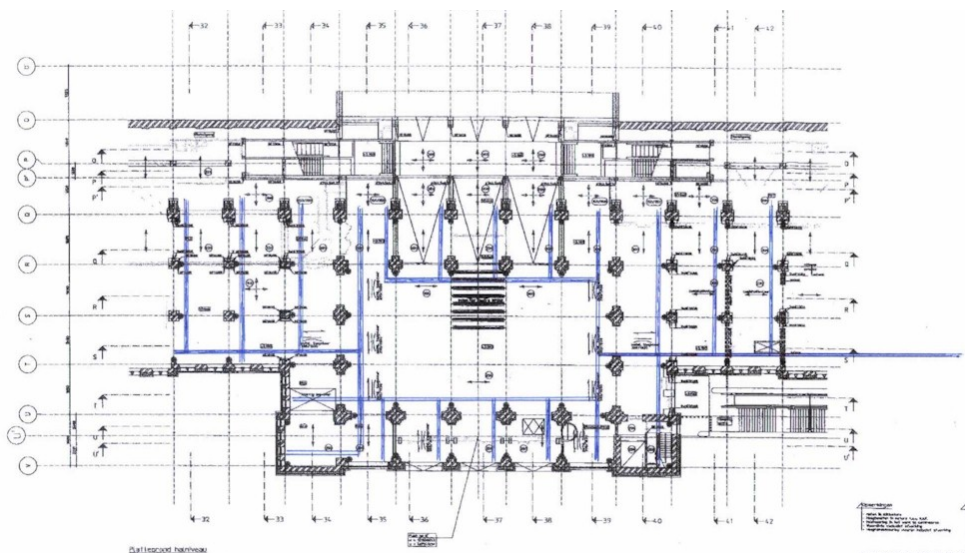
This monumental old station building, standing on nine thousand wooden piles, must not be damaged in any way. To accurately monitor the building two Profound IS-geotechnical monitoring networks have been installed. One of these is a Profound Liquid Levelling System to monitor any settlements that might occur. Our client can log in whenever necessary in order to view measurement data directly and if necessary, change measuring interval. In addition, daily e-mails are sent with status and measurement data, providing a continuous monitoring overview.

Client: IFCO Funderingexpertise BV for "Combinatie Strukton Betonbouw / Van Oord", NL

Location: Amsterdam

Equipment: The IS-Liquid Levelling network consists of:
55 IS-LL sensors (1st generation) including 1 reference sensor
1 IS-power supply
1 central network PC including GSM connection

Monitoring plan (with IS-LL sensor layout in the building)

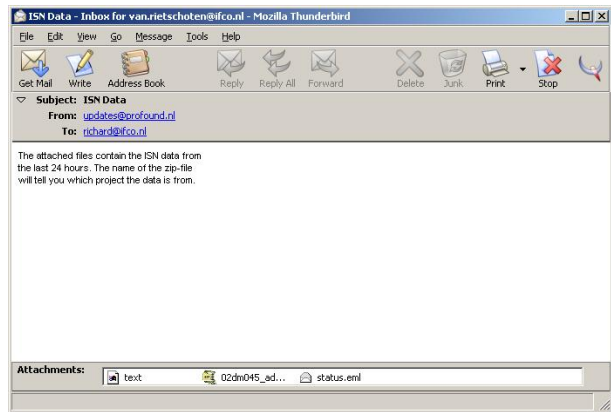
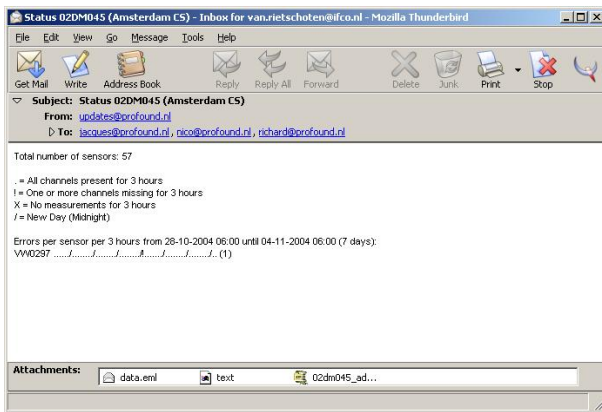


Profound IS – Geotechnical Monitoring System

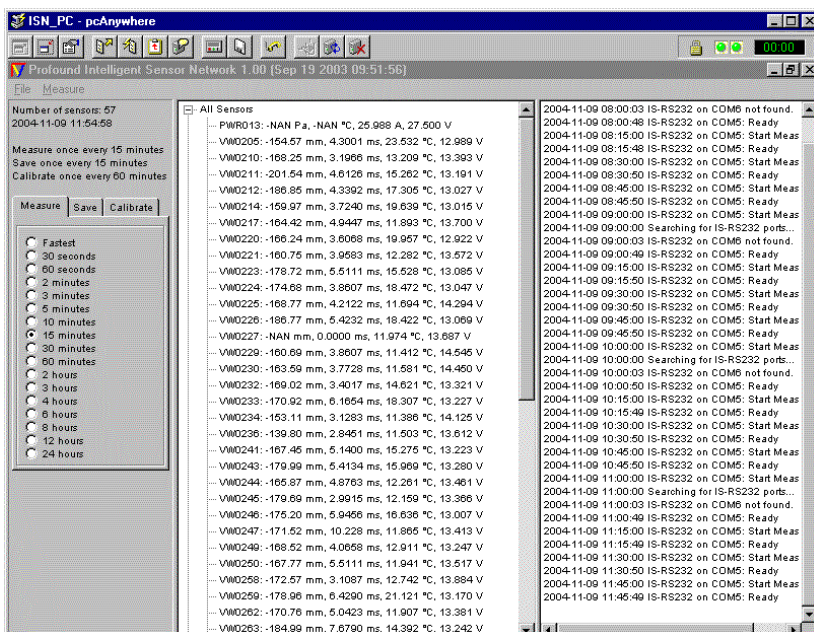
IS - Liquid Levelling system



Daily status check and data retrieval



Remote network control from the office PC



Profound BV

P.O. Box 469
2740 AL Waddinxveen
Tel. + 011 31 182 640 964
The Netherlands

info@profound.nl
www.profound.nl